

Overnight Survival Guide



HAVE A BLAST!

Thank you for choosing the Virginia Air and Space Science Center overnight Scout programs that inspires youth to discover STEM in a fun and educational way. VASSC strives to make your experience out of this world memorable.

If further assistance is needed, please contact the Scout Program Coordinator at scouts@vasc.org or 757-727-0900 extension 709. Office hours are Tuesday-Thursday 10:00 a.m. to 2:00 p.m.

ARRIVAL AND CHECK-IN

Doors open at 5:45 pm. Please be prepared to check-in your entire group in the lobby as the program begins at 6:05 pm.

You may park temporarily by the front of the building to unload gear or youth. Please use the adjacent parking lot, street parking and free garage for overnight parking. Do not park in private parking spaces or you will be towed. **Please remain in the front lobby upon arrival.** VASSC Staff will be able to assist you as you arrive.



When you first arrive at the double front doors, place all sleeping gear and personal items along the wall in the lobby away from walkways. **Please do not block, doors, traffic areas or emergency exits.**

Please sign-in at the check-in table with the Scout Program Coordinator when majority of your group has arrived and confirm your roster. At this time you will review the Code of Conduct policies and sign the agreement.

You will receive a launching packet that includes:

- Paper map (digital maps will also be available)
- Event patches
- Colored wrist bands
- Detailed schedule
- Preassigned sleeping location



Check-in Reminders:

- **You may set up your sleeping area after 9 p.m.**
- Confirm that you have provided a copy of a signed Overnight Scout Program Expectations Agreement (digital or paper)

WHAT TO BRING

Suggested Packing List:

- Cot/Air Mattress/Sleeping bag (if you can carry it, you can bring it)
- Pillow
- Blanket
- Toiletry items (toothbrush/hair comb)
- Refillable water bottle
- Eye Mask or Ear Plugs (optional for light sleepers)
(Lights and audio exhibits will **NOT** be turned off)
- Sleepwear (appropriate for public)
- Slippers or Slipper socks (optional)
- Wagon (optional)
- Group Small First Aid Kit (optional)
- Cash or Credit Card (for purchases in our Museum shop)
- Snacks (allowed in Cafe and Lobby area only)



The temperature in the Center will fluctuate, so please prepare accordingly.

WHAT NOT TO BRING

- Tents
- Hammocks
- Drugs
- Alcohol
- Valuables
- Weapons (knives or guns)

OVERNIGHT ACCESS

For the safety of our guests, the front doors will be locked from the outside during the program and will not reopen until the following morning. Do not exit out the front glass doors after the program has begun or alarms will sound. If you need to exit the building (non-emergency), you may use the employee entrance/exit indicated on the map. When exiting, inform the security guard if you will be returning for the evening.



If you need assistance after 11:00 p.m. the security guard will notify the overnight staff member on duty to assist you.



CONDUCT EXPECTATIONS

To ensure the safety of our guests, all participants agree to abide by the Code of Conduct policies regarding appropriate behavior, respect of equipment, facilities and staff members. We reserve the right to remove guest(s) or groups that purposely damage property or is disruptive to the group. Refunds will not be issued under those circumstances. There are security cameras on 24/7.

VASSC's policy states that if a participant has a fever of 100.4°F (38°C) or higher, they should stay home and remain home for 24 hours after they are fever-free without any medication given for fever.

Staff are not responsible for the supervision of minors, loss of valuables or theft. Adult Leaders, parents and chaperones are responsible for the supervision of all minors throughout their visit. All siblings must stay with their caregiver(s). Quiet time is set from 10:45 p.m. to 6:00 a.m.

Friendly Reminders:

- Be respectful of others
- Do not unplug the exhibits
- No eating or drinking near the exhibits
- Place trash in the bins

PROGRAM AND SCHEDULE

Please arrive on time for your special IMAX viewing at 6:05 p.m. A short introduction and mandatory safety briefing from the Education team will immediately follow the film before your instructional program begins.

VASSC intends to provide you with an engaging and quality experience. There will be opportunity for exhibit exploration in the evening hours and early Sunday morning. The gift shop will be opened after breakfast has been served.

Due to space restrictions and fire codes, we request that a minimum of required adults are in the classroom portion of instruction. Please make certain all campers including adults wear their colored wrist band for the evening.

Locations of programs will be listed on the schedule.

K-1
2-3
4-5
6-12



ROCKET PROGRAM

For an additional fee, rocket kits may be purchased when registering for the space science exploration curriculum for 4th graders and up. The maximum participants is 50. Additional kits will **NOT** be available for purchase at the event.

After Sunday breakfast, a rocket safety briefing will be conducted for all the participants and launches (weather permitting) will be held at **Darling Stadium at 4111 Victoria Blvd, Hampton VA.**

For groups participating in the Rocket program, please be prepared to drive your entire group from VASSC to the launching area.

Parking is available only at the Hampton City Library at 4207 Victoria Blvd (located across the street from the launch site).





ADA COMPLIANT

- Elevator
- Wheel Chair ramp accessibility
- Handicap parking

If you have special medical needs: electrical outlet for CPAP machines, medication refrigeration or a wheel chair, please contact the Scout Program Coordinator 2 weeks prior to your arrival.



SPECIAL ACCOMMODATIONS

Girl Scouts of the USA and Scouting America have organizational policies in place for privacy and safeguarding youth members.

If you need special accommodations in regards to co-ed adult or youth lodging within your group, please contact the Scout Program Coordinator **2 weeks in advance** from the event date. Ultimately, the Group Leader in charge of the group is responsible for communicating this request before arrival.

FACILITY EMERGENCIES

Like other public institutions, the Center is required to meet fire and emergency standards. Heat and smoke detection systems are installed throughout the Museum. Security guards are on duty throughout the night, supervising the facility regularly. Overnight staff is trained in emergency exit procedures.

In case of an emergency evacuation, the meeting location for all campers will be at the Carousel Park as indicated on the map.

MEDICAL EMERGENCIES

If a medical emergency arises, alert your group's first-aid person and a staff member. Adults should have the emergency contact phone numbers for all people in their groups.

If anyone in your group is feeling sick or with a fever, they cannot attend the program or stay overnight.

MEDICAL NEEDS AND FIRST AID

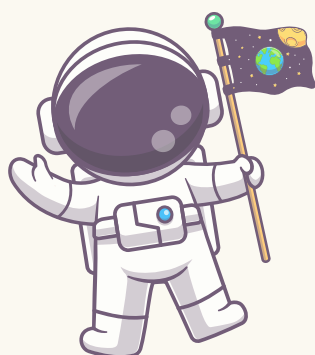
The Group Leader is responsible for providing first-aid equipment and a trained first-aid person with you.

VASSC has a room with a quiet rest area and a refrigerator for medicine available upon request. Please bring any medications for your group. The Group Leader is responsible for all medications.



FAMILY EMERGENCIES

In the case of a family emergency, please call 757-727-0900 ext. #751. This number is for emergencies only and is staffed around the clock by a security guard. Please make sure that all incoming callers know the participant's full name, leader's name, and troop number.



BREAKFAST & DEPARTURE

Grab and Go breakfast will be available at 7:30 a.m. Patrons will have access to the front doors to load gear during this time. If you are exploring the Center until 10:00 am, place your gear in the SMALLab room (located on the first floor by Apollo 12 capsule).

The gift shop will be open Sunday morning. The overnight program ends at 10:00 a.m.